

# GATV/MATV-PASSIVE DEVICES

## TV / Radio Wall Outlet Socket, Loop-Through Type

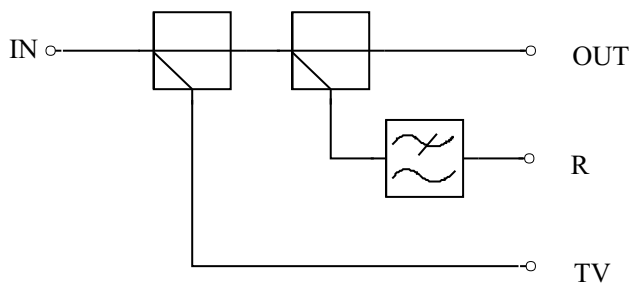


	5	140	470	862	MHz
IN to OUT	_____				-3dB~-1dB
TV OUT	_____				-8dB~-24dB
Radio OUT	_____				

TF-75-8 (10, 12, 18, 24)G

### Features :

- 2 output ports dedicated for radio and TV signals
- Single coaxial cable conveys all signals
- Designed for "Loop-Through" distribution connection
- 5 different tap values available
- RFI shielding and zinc alloy die-casting case integrated with connectors



# CATV / MATV PASSIVE DEVICES

## TV / Radio Wall Outlet Socket, Loop-Through Type

### Specifications :

Description		Freq. (MHz)	8G	10G	12G	18G	24G
Insertion Loss (dB)	IN - OUT	5 ~ 47	2.8 1.0	2.0 0.8	1.4 0.6	0.8 0.6	0.8 0.6
		47 ~ 470	2.8 0.6	2.2 0.5	1.4 0.5	1.0 0.5	1.0 0.5
		470 ~ 862	3.4 1.2	2.6 1.0	1.8 0.8	1.4 0.8	1.4 0.8
	IN - TV	5 ~ 47	8 1.0	10 1.0	12 1.0	18 1.0	24 1.0
		47 ~ 470	8 1.0	10 1.0	12 1.0	18 1.0	24 1.0
		470 ~ 862	8 1.5	10 1.5	12 1.5	18 1.5	24 1.5
	IN - R	5 ~ 47	8.0 1.0	10.5 1.0	12.5 1.0	18.5 1.0	24.5 1.0
		47 ~ 140	8.0 1.0	10.5 1.0	12.5 1.0	18.5 1.0	24.5 1.0
	Isolation (dB)	TV - TV	5 ~ 300	42 min.	46 *		
300 ~ 862			36 min.	46 *			
TV - OUT		5 ~ 47	30 min.				
		47 ~ 862	40 **				
TV - R		5 ~ 47	35 min.	40 min.			
		47 ~ 862	40 *				
R - OUT	88 ~ 108	30 min.					
Return Loss (dB)	IN	5 ~ 47	17 min.	20 min.			
		47 ~ 862	17 *	20 *			
	OUT	5 ~ 47	20 min.				
		47 ~ 862	20 *				
	TV	5 ~ 862	10 min.				
	Radio	5 ~ 140	10 min.				
Impedance ( input / output )		75					
Connectors	IN / OUT	Terminal Block					
	TV	"IEC" Male					
	Radio	"IEC" Female					
Screening (dB)		VHF > 75 & UHF > 65					
Dimensions (with connectors)		70 x 68.7 x 30.1 mm					
Weight		106 g					

\*at 47MHz -1.5dB/oct.

\*\*at 47MHz -2.0dB/oct.

Specifications are subject to change without notice.

Special specifications can be specified by order.